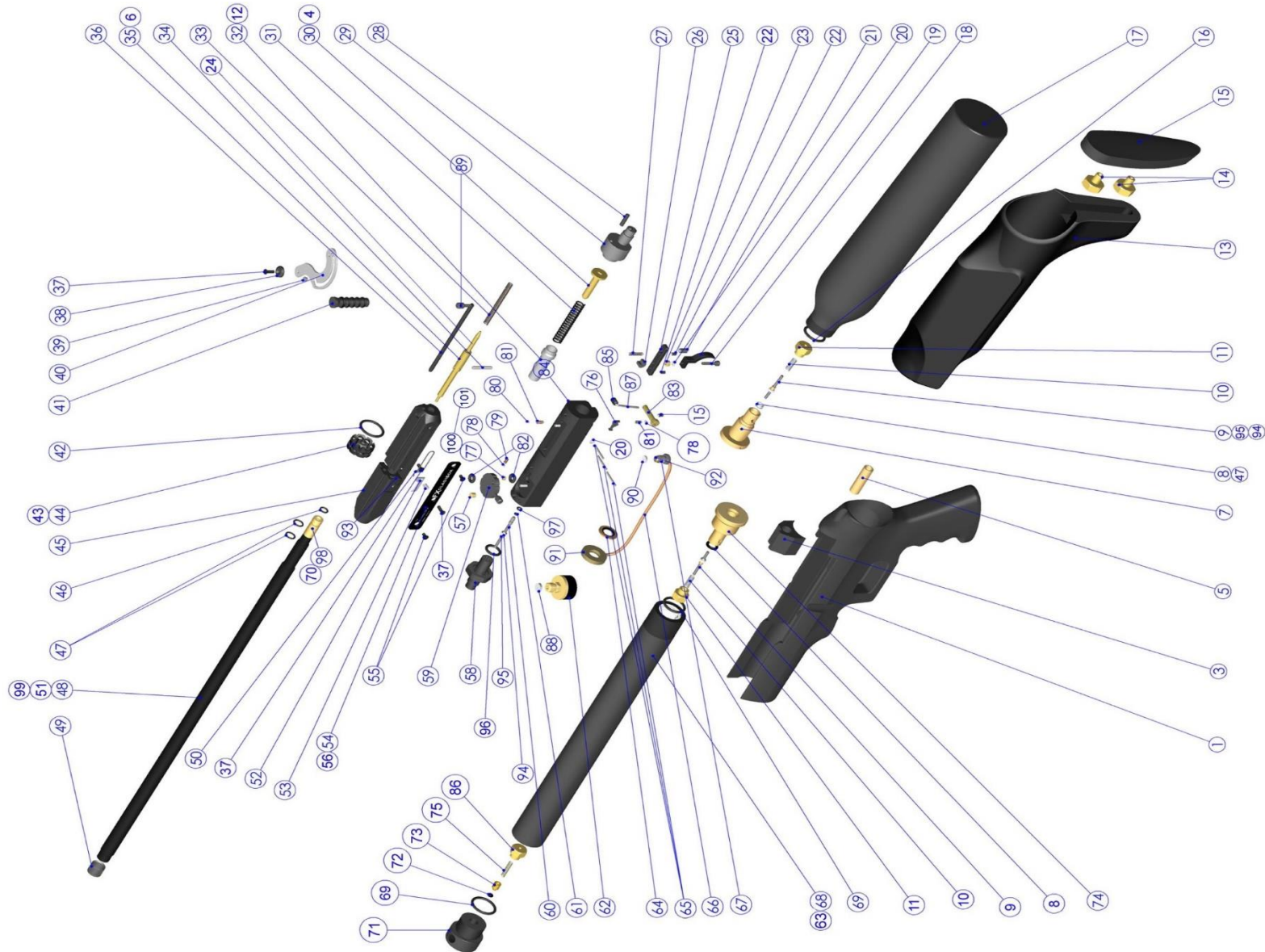


Model	Other model names	Date	Revision	Revision date
FX Gladiator	Logun Gladia8or	2018-06-18	EN.20.01	2020-04-08





Model	Other model names	Date	Revision	Revision date
FX Gladiator	Logun Gladia8or	2018-06-18	EN.20.01	2020-04-08

NO	ART.NO	DESCRIPTION	NO	ART. NO	DESCRIPTION	NO	ART. NO	DESCRIPTION	NO	ART.NO	DESCRIPTION
1	14011	Stock Gladiator grip	31	11500	Hammerspring	61	2528	O-ring 1.5x1 NBR70	91	14016	Brass washer
2	2529	O-ring 4.3x1.5 NBR70	32	11023	Hammer	62	11505	Pressure gauge 25mm 1/8"	92	14017	Brass cap
3	14012	Plastic Magazine pin slider	33	12005	Spring 0.75x4x65	63	11653	500mm Air cylinder	93	2029	Magazine stop
4	11030	Hammer spring Adjuster M16x1x2,5	34	11514	Cylindrical pin 3m6x22	64	11507	Rubber/steel washer M12	94	2040	Plastic Washer
5	11512	Brass cap M8	35	11025	Pellet prod .22	65	11502	Pivot pin 2x20	95	2041	Holder Valve Seal
6	11048	Pellet prod .177	36	13002	Magazine pin	66	14013	Copper pipe	96	17047	O-ring 11,91x2,62 NBR 70
7	14000	Air bottle steel end	37	2508	Countersunk screw M3x10	67	14014	Connector M8	97	7044	Valve seat Complete
8	7044	Valve seat Complete	38	11018	Sidelever washer	68	16017	390mm Air cylinder	98	2056	Barrel Inlet .22
9	7018	Valve pin for Air tube, Complete	39	12028	Sidelever bearing	69	11624	O-ring 22x2.5 NBR70	99	N/A	N/A
10	2525	Spring 0.6x4x15	40	11034	Sidelever	70	2057	Barrel brass inlet .177	100	11528	Air Transfer Port 12ft/lbs
11	11013	Valve pin Nut V.2	41	11016	Cocking Handle	71	11029	Air cylinder end inlet	101	11536	Air Transfer Port - High Flow
12	11540	Hammer weight	42	5101	O-ring 20x2.5 NBR70	72	5111	O-ring 2.5x1.5 NBR90			
13	14010	Stock Gladiator rear	43	11051	Magazine .177	73	12011	Inlet valve			
14	2082	Nut M4 – 19mm	44	11050	Magazine .22 v2	74	11035	Air cylinder end (brass)			
15	11526	Buttpad	45	11045	Barrelhousing V2	75	5204	Spring 0.5x3x15			
16	5103	O-ring 18x2.5 NBR90	46	5112	O-ring 5.28x1.78 NBR70	76	11031	Trigger sear			
17	5536	Tube/ Bottle 500cc Complete	47	2529	O-ring 4.3x1.5 NBR70	77	11528	Air Transfer Port 12ft/lbs			
18	11546	Socket head cap screw M3x14	48	12006	Barrel 5,5-14-485	78	4066	Steel ball 3.0			
19	2020	Trigger blade	49	11038	Muzzle thread cover 14mm	79	11503	Spring 0.5x2.5x4.4			
20	11531	Washer 3,2x6x0,5	50	11516	Index lever connector	80	11527	Steel ball 3.175			
21	11015	Second stage trigger screw M5	51	12030	Barrel 4,5-14-485	81	11501	Spring 0.5x2.5x6.1			
22	2500	Grub screw M3x6	52	11041	Index lever	82	1504	O-ring 4.42x2.62 NBR70			
23	2063	Trigger spacer	53	2520	Spring 0.5x4x7	83	11027	Safety pivot			
24	11042	Spring guide M5	54	11057	Sideplate Gladiator	84	11044	Body			
25	11524	Trigger base	55	2504	Countersunk screw M3x6	85	11200	Safety knob			
26	11525	Trigger wheel	56	11057	Sideplate Gladiator	86	11017	Air Cylinder End Inlet Nut			
27	11504-2	Spring 0,4x2,5x15 Jp	57	11626	Spacer 4,8	87	11625	Safety lever 27,5mm Cyclone, Cutlas, Rancho.			
28	12033	Conical grub screw M4x8	58	14005	Air cylinder connector	88	5005	Plastic Washer 2mm 1/8"			
29	14008	Air bottle connector	59	11020	Power adjuster blank	89	11644	Magazine Pin Handle			
30	11541	Hammer spring adjuster	60	7035	Valve pin V2 complete	90	14015	Plastic Washer 6,8x2 Coppertubing			